

# Good Friday Reflections/Devotions

Good Friday Devotions and Reflections will be available beginning Wednesday, April 13th. Community members are encouraged to explore the stations at a time that fits their needs.

The stations will also be the focus of our community Good Friday Service at Noon on April 15th. There are seven stations of reflection positioned along the walking trails and labyrinth area. Stations can be accessed sequentially or any order you choose. Each station focuses on events occurring between the Last Supper and crucifixion. There is artwork to paint a visual picture of each event, as well as reflections and questions intended to help you consider the feelings of those Jesus-followers most closely associated with each event. A campus layout is enclosed, as well as additional information about Lenten resources at Sardis Baptist Church.

# Stations of Devotion and Reflection



Begin in Labyrinth.  
Walk to center.



Exit Labyrinth.  
Turn right.



Follow sidewalk toward  
meetinghouse.



Turn right toward  
meetinghouse.



Station One:  
The Table



Pass the Peace Angel.



Follow path toward picnic shelter.



Station Two:  
The Garden



Walk through shelter.  
Stay on path.



Follow path. Keep left.



Station Three:  
The Arrest of Jesus



Follow path. Stay left  
of garage.



Path loops left and  
then right.



Station Four:  
The Trial of Jesus



Follow the bend  
toward clearing.



The garage will  
be on your right.



Keep left.



Path opens toward  
meadow.



Station Five:  
Women to Remember



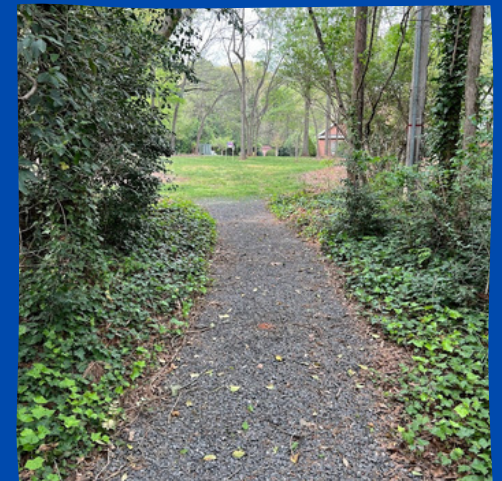
Head for the  
trees!



Head toward the  
magnolia.



Station Six:  
Helpers of Jesus



Head for the  
clearing



Follow grass toward meetinghouse.



Station Seven:  
Death of Jesus



Follow grass  
to gravel service path.



Follow path to  
sidewalk.



Follow sidewalk to  
Labyrinth.



Re-enter Labyrinth.



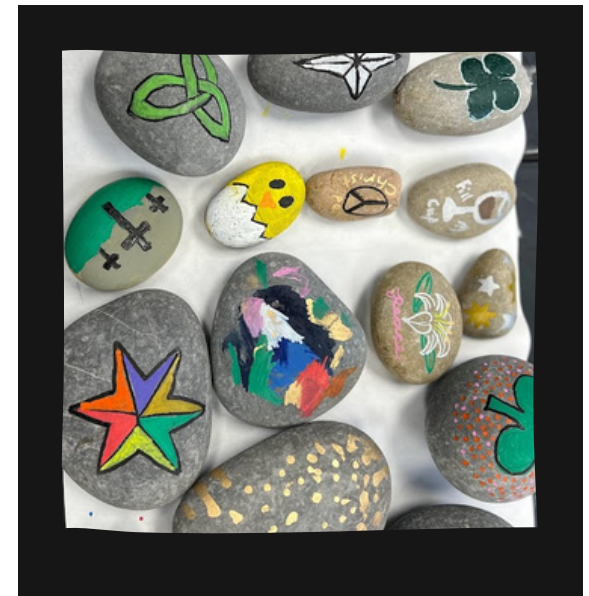
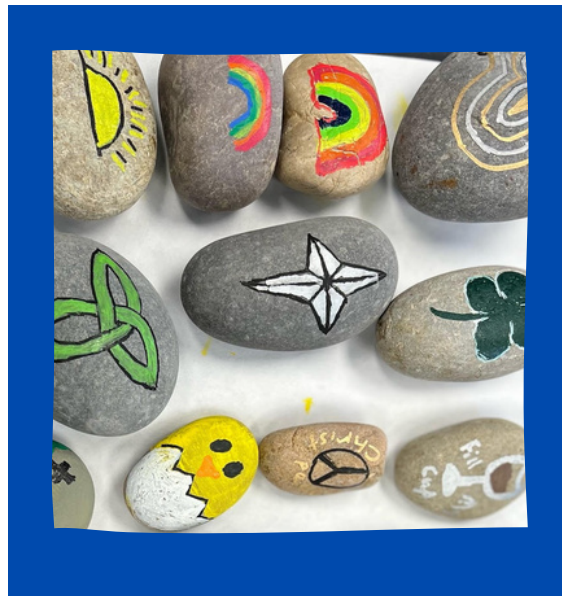
Find your center.



Look toward the cross.

Your  
Journey  
is  
Complete.





## Stones of Encouragement

During Lent, Sardis congregants painted rocks with various symbols of hope and encouragement: clovers, lanterns, even Krispy Kreme Doughnut boxes! These rocks have been placed along the walking trails and Labyrinth.

Please take one home for your enjoyment, or create one to share with others.





# The Phone to Forever

The Phone to Forever is for all the important calls you have wanted to make. Let your heart reach across space and time. You have the number.





During Lent, Sardis adorns our Labyrinth cross with various colors and fabrics. Lent is a time for discerning our calling, and finding the courage to follow it. Sometimes, the truth we seek comes in different shades and shapes. We encourage you to find the shade that allows you to live into your createdness.

#CrossOfManyColors