

sardis signposts

baptist church

a spiritually progressive community of faith

5811 Sardis Road / Charlotte, NC 28270 / 704.362.0811
SardisBaptistCharlotte.org

WORSHIP SCHEDULE

Sunday at 9:45 AM
Study Group

Sunday at 11:00 AM
Morning Worship

EMBRACING DOUBT

Have you ever questioned what you've been taught about the character of God? Omniscient, omnipotent, omnipresent, and omnibenevolent? Is that possible considering the state of our world? Or maybe you've been derided for questioning the authenticity of a bible story? Do you think Mother Mary was a virgin? Do you believe the Red Sea parted for the Israelites, then swallowed the Egyptians? Would an omnibenevolent God ordain the death of so many humans and their horses too?

Most of us have questions of faith and experience doubt at some point on our spiritual journeys, but it's not something that is frequently talked about in Christian communities. Doubt is often downplayed, and doubters are sometimes shamed. Not at Sardis Baptist! We recently adopted a mission statement that includes our aspiration to "wrestle with doubt" as a consistent component of our identity. But during Lent, we won't wrestle with doubt; we will embrace it!

There are many bible stories that embrace doubters and we will focus on some of them through the season. We'll see that questioning, uncertainty, and curiosity can be transformational tools that ultimately deepen and strengthen our faith. In his book, *Faith after Doubt*, Brian McLaren shares his four stages of faith, and suggests how our attitudes towards doubt evolve as our faith progresses: 1-Simplicity, doubt in this stage is considered a failure or sin; 2-Complexity, doubt is a problem to be solved; 3-Perplexity, doubt is a virtue to be cultivated; and 4-Harmony, doubt is a necessary part of life, a portal from one state to another.

We will remember that God is a nebulous power—a word derived from nebula, which refers to something outside of the Milky Way, something other-worldly and mysterious. When I accept God as such a power, I find peace and feel God's presence. On the contrary, when I find myself falling into old habits of unequivocal understanding, my connection to the divine is lessened. In her book, *Plan B*, Author Anne Lamott says, "The opposite of faith is not doubt, but certainty. Certainty is missing the point entirely."

During worship throughout the season of Lent, we'll invite Sardis friends to share testimonials of their experiences with doubt and faith. Your stories add depth to the intent of worship and accentuate the messages. We hope you'll participate! Please let me know if you would like to share a testimonial during worship.

~ Kathryn Kreuter

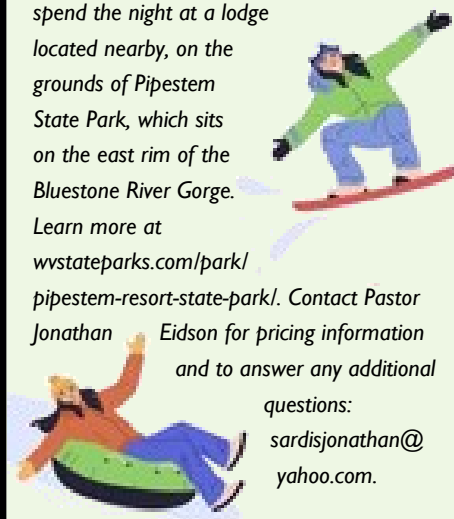
WINTERPLACE 2024 RETREAT

Jonathan's ski trips have been a highlight for Sardis friends through the years, and the 2024 retreat is sure to be the same! We are renting a van for the group to travel together, heading to the hills midday on Friday, February 23rd, and returning to Charlotte on Saturday night. A range of winter activities are available for folks of all ages, so we hope you'll join this intergenerational trip. Participants will choose between skiing, snowboarding, and snow tubing (which requires no experience and no special equipment).

Activities will take place at Winterplace Ski Resort in Ghent, West Virginia which is approximately 3 hours from Charlotte, located just a few miles off Interstate 77. Learn more about their trails and activities through their website: winterplace.com. The group will spend the night at a lodge located nearby, on the grounds of Pipestem State Park, which sits on the east rim of the Bluestone River Gorge.

Learn more at wvstateparks.com/park/pipestem-resort-state-park/. Contact Pastor Jonathan Eidson for pricing information and to answer any additional questions:

sardisjonathan@yahoo.com





The Communication Crew will lead Sardis to tell its story more effectively. Their goal is to develop intentional plans for internal and external communication to communicate the authenticity of the church which meets at Sardis.

MELISSA BOWLIN has been connected to Sardis for about 25 years. Her personal stories have kept us laughing and have challenged us to think. Her most recent employment was as a domestic violence officer with Charlotte Mecklenburg Police Department. Previous engagements were with Charlotte Mecklenburg Schools as a Drop-out Prevention Counselor, and she served a church in Charlotte as Minister of Youth and Education. January 25th marks the sixth anniversary of an automobile accident which has limited her activity.

REV. AMANDA LEWIS's varied experiences have sharpened her skills as a storyteller. From several months serving in Ghana with the Virginia Baptist Yendi Initiative to time as an intern with Colonial Williamsburg's Historical Food Ways to ministering to college students in Athens, GA, Amanda has put her degree in Colonial History and in Africana Studies to good use (William and Mary).

Since graduating from the McAfee School of Theology with an emphasis on pastoral care, she has ministered as a hospice chaplain.

HILARY MCINTYRE's stories are musical, told through song. She is a Charlotte native; high school years found her at the Northwest School of the Arts. She continued her music education at Appalachian State University where she earned a degree in vocal music and at Florida State University coming away with an MA in vocal music. In addition to being Sardis's music minister, she teaches voice and piano and works in the Concord Schools. She has enjoyed performing in operas and musical productions.

KRISTIN PARKER has found that teaching is a great way to share stories. She teaches Legal Research at Central Piedmont Community College where she has met people from all over the world, some who aim to be a lawyer or a paralegal and some who are honing their skills to practice in the United States. Her students range from lawyers who come from Russia or Brazil to women who work as waitresses and are mothers. Kristin's primary job is with the Public Defender's Office where she is a paralegal.

REV. DR. DAYNETTE SNEAD PEREZ's aim in storytelling is to transform relationships. She is the creator of DIASPRA, a branch of which is her Stranger to Neighbor ministry. Her ministry positions in Scotland and with a Burmese congregation in New Bern, NC have helped prepare her to teach others how to overcome difference and forge new relationships. She has worked with CBF where she directed programs and projects to help people affected by natural disasters to overcome those obstacles in their lives.

Daynette currently serves Sardis as Interim Pastor.

Let's Pray!

HEALTH AND WELLBEING

Ken Abbott, friend of June Ross • Rita Akers, friend of the Phillips • Clemmer Allison, friend of Alcie Kreutzer • Charles Almond, grandfather of Jacqueline Stillerman • Holly Almond, aunt of Jacqueline Stillerman • Melissa Bowlin • Mark & Cheryl Bradbury, friends of Jonathan Eidson • Maria Byrd • Murphy Clark, relative of Robin Rowland • Rae Deicke, friend of Jean Lawrence • Nela Demme, Ron's dog • Betsy Cadle DePaul • Dusty Detterman, daughter of June Ross • Luke Duncan, son of Tillie • Amelia Eidson, Jonathan's mother • Ethan, young friend of Shirley Lewis • Ed Gash • Mildred Gragg, mother of Billie Hutchison • Richard Greene, brother-in-law of Doris Waiters • Mary Moon Guerrant, mother of Kathryn Kreutzer • Marvin Jean • Jen Kaminska, friend of the Kreutzer family • Robert Marshall, grandson of Janette Grassi • Rex Nordeen, cousin of Tillie Duncan • Frank Phillips, brother of Danny Phillips • Vicki Phillips, niece of Shannon Duncan • Rachel, Kendarius, and Mekhi Phipps, friends of Betty Gunz • Planet Earth • Pam Poston • Bill Reynolds, son of Mala • Mala Reynolds • Bob Rowland, Robin's father • Pamela Schwartz, former staff of St. Stephen UMC • Ken Smith, friend of the Kreutzer's • Nancy Steavenson, friend of Jean Lawrence • Tanya Stevensen, daughter of June Ross • Katie Wiebke, daughter of Mark & Amy • Mark Wiebke • Kelly Wise, friend of Melissa Bowlin

TRAVELING MERCIES

• Askins Family (Rebecca, Jourdan, Joey, Brady, Samuel, Reece, Keely) • Leon Fisher • Karen, friend of Amanda Lewis

Gratitude

for the service of Chris Mair

"CHRIS HAS BEEN INVALUABLE TO SARDIS. As treasurer, I have deferred to him because he has the savvy in computer programming that I don't have, and he is highly organized," avers Jim Owen, current treasurer of Sardis Church.

Chris was treasurer of the church for two three-year terms beginning in 2006. While in this capacity he developed a treasurer's handbook, a procedural manual of exactly how to do a task and when to do it. What a help this has been and will be as most officers of small churches are not professionals in the area in which they serve.

Jim Owen became treasurer after Chris's last term expired. Chris offered to mentor him while he learned the various tasks of a financial officer. Since the mentoring has extended to a dozen years, Sardis has fallen into the habit of thinking the two men co-treasurer.

Chris is a software developer for Principal Financial Group (based in Des Moines Iowa). His favorite pastime is group bike rides in which he engages once or twice a week, most often in the evenings. "I am still amazed that we can ride all the places we do, like five or ten of us riding down Tryon in Uptown at 9:30 PM," he exclaims. He and wife Elizabeth Mosley have two sons, Matthew and Jackson, both of whom are students at Appalachian State University. Going from a four-person household to a two-person has been interesting, he says. "...lots more free time and less responsibility. We miss the kids, though, and now really cherish the time with them when they come home."

Chris feels fortunate as he looks to the future. He is working at being "intentional" and "living in the moment," which he finds challenging as he is a forward-looking planner. Sardis feels fortunate — privileged — to have benefitted from Chris's dedication and contributions. His significant talents and efforts have helped to effect our success. THANK YOU, CHRIS!



Welcome Aboard

The Board of Trustees is pleased to introduce Sardis Baptist Church to Traci Fletcher, who has been hired to support Jim Owen with accounting responsibilities. She will be helping with payroll, tax filing, and other financial obligations of the church. Traci is a long-time business associate of our chair of trustees, Danny Phillips, and he is pleased that she has agreed to come aboard as support for the treasurer and trustees.

Traci is the Chief Financial Officer at Ross & Witmer, where she manages the company's accounting department, and is also the President of TSS Consulting, recently established to assist small businesses with fractional CFO guidance. Traci has been on the leadership team at Ross & Witmer since October 2014.

Before Ross & Witmer, Traci spent ten years in various FP&A leadership roles at Carrier Corporation, where she most recently served as manager of Financial Planning and Analysis for Carrier Enterprise Southeast division. During her tenure, Traci was instrumental in building the annual plan for multiple business units as well as tracking the companies KPI's monthly. Traci also spent 8 years in various cost accounting and financial planning roles at New Venture Gear, a division of Chrysler Corporation. She is ACE (Achieving Continuous Excellence) certified which was United Technologies internal Sig Sigma program.

Traci is originally from Syracuse, NY where she attended Le Moyne College obtaining a Bachelor of Science in Accounting and a Masters in Business Administration. Outside of work, Traci loves to travel, watch basketball, and enjoys playing in her garden. She is married to JW Fletcher and has a 15 year-old son, Andrew, who is her favorite basketball player at Davidson Day School.



Sardis Baptist Church

FEBRUARY

SUN	MON	TUE	WED	THU	FRI	SAT
		The Garden Preschool — 9:15 AM to 1:15 PM		1 Charlotte Wildlife Leadership Team	2 9:30 AM Clergy Group	3
	Sardis Piano Academy — 3:15 PM to 8:45 PM					
4 Fifth Sunday after Epiphany 9:45 AM Book Study: Dancing in the Darkness 11:00 AM Worship Noon Pastor Search Team	5	6 The Garden Preschool — 9:15 AM to 1:15 PM	7	8 Sardis Piano Academy — 3:15 PM to 8:45 PM	9	10
		10:30 AM Structures & Systems	4:00 PM Staff Meeting 7:30 PM Choir Practice			
11 Transfiguration Sunday 9:45 AM Book Study: Dancing in the Darkness 11:00 AM Worship & Baby Dedication: Phillip Henkel-Lewis	12	13 The Garden Preschool — 9:15 AM to 1:15 PM	14 Ash Wednesday & Valentine's Day 6:00 PM Shrove Tuesday: Pancakes @ IHOP 7:00 PM Charlotte Wildlife: Vultures	15 9:30 AM Clergy Group	16	17
		Sardis Piano Academy — 3:15 PM to 8:45 PM				
18 First Sunday in Lent 9:45 AM Book Study: Dancing in the Darkness 11:00 AM Worship	19 President's Day 12:30 PM G3 Lunch Chick-O-Rico (Sardis Carpool at Noon)	20 The Garden Preschool — 9:15 AM to 1:15 PM	21 Sardis Piano Academy — 3:15 PM to 8:45 PM	22 Winterplace Ski & Tube	23	24 Winterplace Ski & Tube
25 Second Sunday in Lent 9:45 AM Book Study: Dancing in the Darkness 11:00 AM Worship	26	27 The Garden Preschool — 9:15 AM to 1:15 PM	28 Sardis Piano Academy — 3:15 PM to 8:45 PM	29 FEBRUARY 29 HAPPY LEAP DAY		

MUSICAL NOTATION

~ Hilary McIntyre, Minister of Music ~

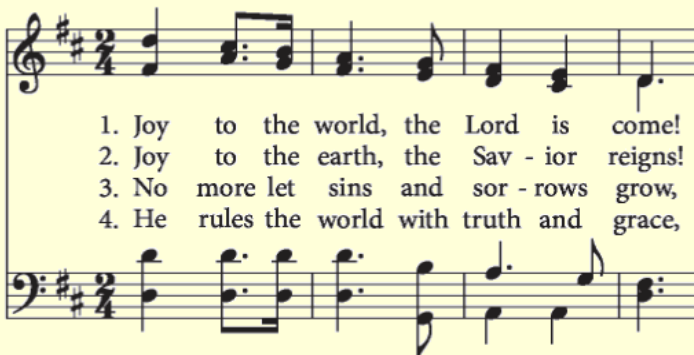
"In last month's Signposts, we were introduced to some beginner musical notation. These included clefs, basic rhythmic notations, and using the staff to determine if pitches are higher or lower. This month, I would like to focus in on pitch a little closer using something called Solfege. Whether you've heard this term or not, you have definitely used Solfege. This unique term refers to the sequence of syllables we use to teach children to sing scales--the first pitch in the sequence is "Do", the next is "Re", then "Mi" and so on. If you've seen The Sound of Music then you already know some Solfege.

Here is the basic Major Scale written in Solfege:

Do (doh) Re (ray) Mi (me) Fa (fah) Sol (so) La (lah) Ti (tee) Do

You'll notice that "Do" shows up at the beginning and end of the sequence, that's because a scale starts on a particular pitch and isn't "complete" until that pitch returns.

So how can Solfege help us with reading hymns? You may not look at a piece of music and see "Do Re Mi..." but if you can hear how those syllables relate to each other you can start to pick up on patterns that repeat. Let's use "Joy to the World" as an example.



1. Joy to the world, the Lord is come!
2. Joy to the earth, the Sav - ior reigns!
3. No more let sins and sor - rows grow,
4. He rules the world with truth and grace,

The melody, the top line of notes in the song, follows the Solfege scale exactly, but in reverse. When you hear and sing "Joy to the world," you are actually singing "Do Ti La Sol". "The Lord is come!" is "Fa Mi Re Do," so altogether the melody is "Do Ti La Sol Fa Mi Re Do" which is the opposite of "Do Re Mi Fa Sol La Ti Do".

To read a hymn using the staff, first you need to understand how the staff is organized. As stated above, higher notes are physically higher on the staff. Notes can either be placed on one of the lines of the staff, or in one of the spaces. If we use the hymn above, the first note we see at the top of the staff is on the 4th line; that is followed by a note on the 3rd space, this means the melody is descending. Because the first note is on the 4th line and the second note is on the 3rd space, we call the distance between the two a step. The Major Scale, as seen above in Solfege, is made completely out of steps, and so is our melody for "Joy to the World".

Next month we will delve deeper into steps on the staff versus their counterpart, skips, but for now I hope you add this to your toolbox for reading hymns!

February Fellowship

We have several opportunities planned for fellowship in February outside of our regular gathering times. We hope you'll note the following dates in your calendars and plan to gather for good times with Sardis friends:

Tuesday, February 13th @ 6:00 PM

Shrove Tuesday Pancake Supper

IHOP—9253 E. Independence Blvd



Monday, February 19th @ 12:30 PM

G3 @ Chick-O-Rico, 7510 Pinville Matthews Road

Carpoolers should gather at the meetinghouse at noon.



Wednesday, February 21st @ 5:45

Fellowship Dinner @ Sardis Meetinghouse

Making Lenten Love Wreaths at 6:30

SPIRITUAL DIRECTION

~ Rev. Jonathan Eidson ~

Decisions, decisions, decisions! Every day, we make decisions. In a recent sermon, Dr. Daynette told us humans make approximately 35,000 choices each day. Some of them we don't even realize we're making but some we do. How do we make the difficult choices?

My spiritual direction began with the reading of a scripture passage, this one from Paul's letter to the Philippians, 4:6-7:

"Do not worry about anything, but in everything by prayer and supplication with thanksgiving let your requests be made known to God. And the peace of God, which surpasses all understanding, will guard your hearts and your minds in Christ Jesus."

We pondered the passage during a time of silence and in the silence, what came to me was decision making and discernment. If you check the dictionary, discern means to perceive, recognize, or detect with the senses. As followers of Christ, our faith adds another level that helps us discern.

When we concentrate on our decisions, St Ignatius of Loyola says we might place the emphasis on our feelings or inner emotional states. He named two of these. The first, "consolation" is defined as an inner movement that stirs up feelings of peace, hope, and love, and orients us toward God and toward helping others, while the second, "desolation" is defined as the exact opposite.

Prayer may play an important role as you can see in the scripture passage above. The peace of God will guard our hearts and our minds. My spiritual director said, "If you don't have peace, it's time to pray." I believe that if we're facing tough choices, it's time to pray!



**Bluebird House
Workshop at Sardis
January 21st, 2023**

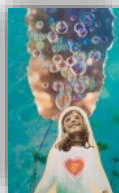
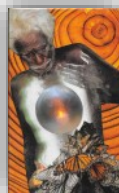


SoulCollage®

Dr. John Simpson is a trained SoulCollage® facilitator. He and Janette Grassi are offering a free virtual workshop for Sardis friends and guests on Saturday, March 2nd at 10 AM. Space is limited, so we recommend that you reserve your spot early by emailing the church at info@SardisBaptistCharlotte.org.

Soul Collage is an expressive arts practice done individually or in community. The process encourages you to follow your intuition as creativity and self discovery unfold. Experience and artistic talent are not required!

Some supplies will be available for you to use, but please bring the following items if you have them handy: small sharp-nosed scissors, Exacto knife/box cutter, glue sticks, and a cutting mat.



Lenten Wreaths

Using everyday, ordinary supplies such as recycled paper and cardboard tubes from paper towels, Sardis friends gathered to make magnificent ornaments at gatherings in December. We'll put them to good use during Lent, when we gather to make "Lenten Love Wreaths". Resident crafter, Robin Rowland, will provide grapevine wreath bases for us to adorn with angels, hearts, stars, and other designs that were crafted during our "Magnificent Making" events. The love wreaths will be delivered to Sardis friends that are unable to gather with our church family in person.

Wreath making will take place on Wednesday, February 21st. We'll gather for a fellowship meal at 5:45, and begin crafting at 6:30. We hope you will plan to join us!

